

Enhanced Enterprise Zone

Stockton and Cedar County, Missouri

Creating and retaining new jobs is a priority for Cedar County and its economic development partners, the Cedar County Commissioners, Stockton Area Chamber of Commerce and City of Stockton. The Enhanced Enterprise Zone is a key component of the program for encouraging investment and job creation. The zone allows for local real property tax abatement and can provide state tax credits.



*Cedar County Courthouse
113 South St., Stockton, 65785*



*Stockton Area Chamber of Commerce, Box 410, No. 23
Public Square, Stockton, 65785*



*City of Stockton
1424 South St., Stockton, 65785*

Enhanced Enterprise Zone Overview

The Cedar County/City of Stockton Enhanced Enterprise Zone officially was designated by the Missouri Department of Economic Development Wednesday, July 16, 2014. The zone encompasses all of Stockton and all of Cedar County (the City of El Dorado Springs, which has its own EEZ) except a small portion in the northwest corner of the county north of El Dorado Springs. See the attached map.

The Cedar County/City of Stockton EEZ encompasses available and commercial industrial property, some with a full range of public services including highways, air transportation and tele-communications. Authority for the Enhanced Enterprise Zone is contained in Chapter 135 of the Revised Statutes of Missouri. The Act authorizes state tax credits and local property tax abatements. To qualify, a sole proprietorship, partnership or corporation must meet all the requirements of the Enhanced Enterprise Zone.

Program Requirements

To be eligible for Enhanced Enterprise Zone benefits, a business must meet certain requirements based on the type of business, amount of investment and the location of the facility.

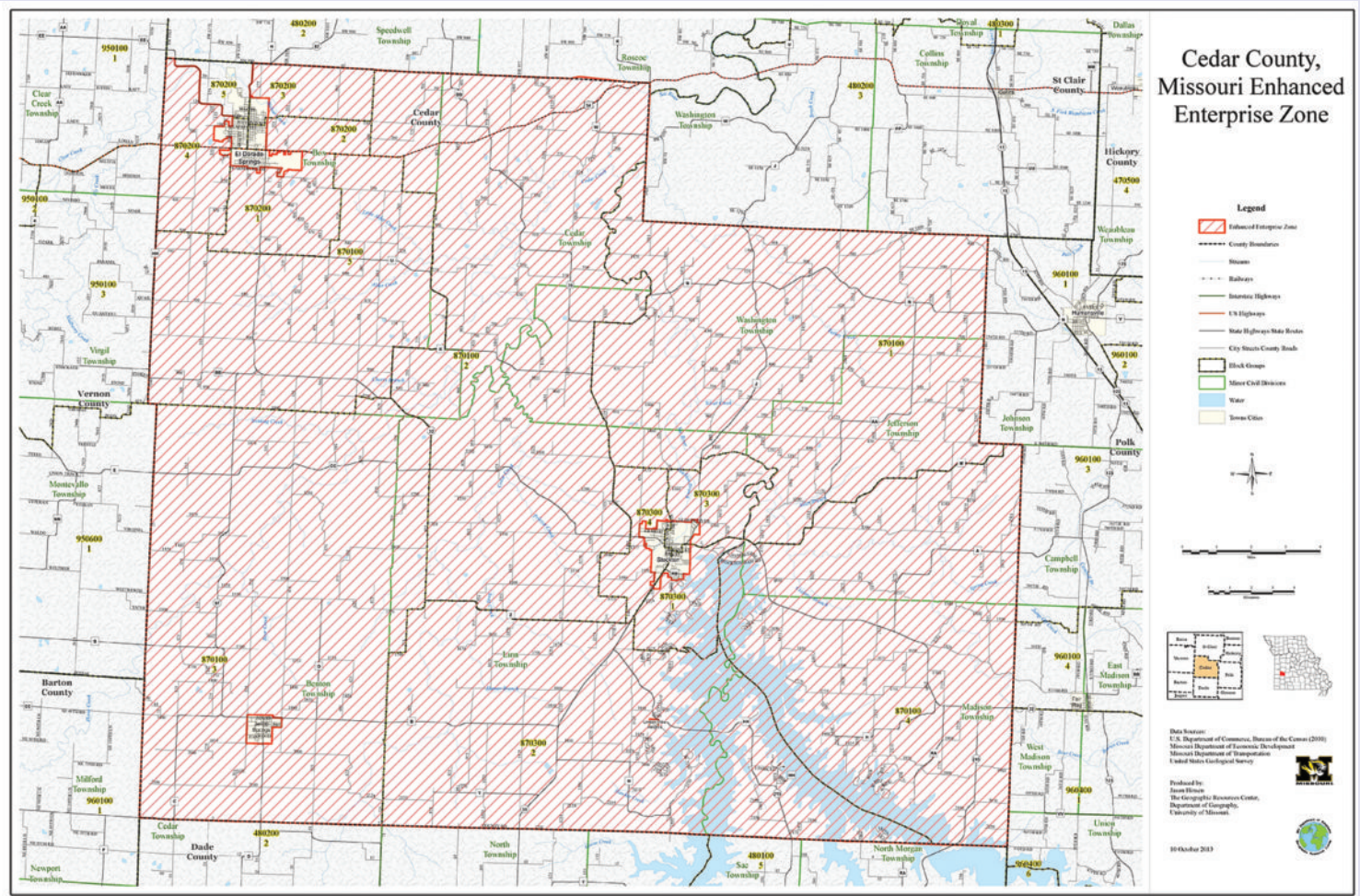
To receive both state tax credits and local property tax abatements, the business must be located within the zone boundaries. Additionally, the creation of at least two new jobs and \$100,000 in new investment is required. These qualifications must be maintained as an annual average in order to receive benefits. See chart below.

Businesses locating within the Enhanced Enterprise Zones, except for those businesses specifically excluded by statute, may be eligible for benefits. The following types of businesses are excluded from benefits by statute:

- Gaming Establishments (NAICS industry group 7132)
- Retail Trade (NAICS sectors 44 and 45)
- Educational Services (NAICS sector 61)
- Religious Organizations (NAICS industry group 8131)
- Public Administration (NAICS sector 92)
- Food and Drinking Establishments (NAICS subsector 722)

The facility must be located within the boundaries of the Enhanced Enterprise Zones, shown generally below.

Cedar County/City of Stockton Enhanced Enterprise Zone



The graph below shows the abatements, eligible industries and the EEZ board. For more information, chairman Marilyn Ellis can be contacted at (417) 276-4211 or vice chairman Mary Norell at (417) 276-5213.

Minimum Requirements—As verified by Missouri DED: 2 New Full Time Employees AND \$100,000 (min.) capital investment	60% abatement /10 years
5+ New Full Time Employees	12% Additional Abatement/10 years
10+ New Full Time Employees	14% Additional Abatement/10years
15+ New Full Time Employees	18% Additional Abatement /10years
25+ New Full Time Employees	20% Additional Abatement/10 years
50+ New Full Time Employees	22% Additional Abatement/10 years
100+ New Full Time Employees	27% Additional Abatement/15 years
250+ New Full Time Employees	32% Additional Abatement/15 years

Cedar County (all state eligible) Approved Targeted Industries

- 11- Agriculture, Forestry, Fishing & Hunting
- 21- Mining
- 22- Utilities
- 23- Construction
- 31, 32, 33- Manufacturing
- 42- Wholesale Trade
- 48, 49- Transportation & Warehousing
- 51- Information
- 52- Finance & Insurance
- 53- Real Estate and Rental and Leasing
- 54- Professional, Scientific & Technical Services
- 55- Management of Companies & Enterprises
- 56- Administration and Support of Waste Management and Remediation Services (exclusion of NAICS 562112-Hazardous Waste Collection, 562119-Other Waste Collection, 562211-Hazardous Waste Treatment and, 562212- Solid Waste Landfill, 562213- Solid Waste Combustor and Incinerators, and 562219-Other Nonhazardous Waste Treatment and Disposal)
- 62- Health Care & Social Assistance
- 71- Arts, Entertainment and Recreation (with the exclusion of NAICS group 7132-Gambling Establishments)
- 72- Accommodation and Food Service (with the exclusion of NAICS subsector 722-Food and Drinking Places)
- 81- Other Services (with the exclusion of NAICS group 8131- Religious Organizations)

Name	Appointment	Business Affiliate
Marilyn Ellis	Chairman	Cedar County Republican
Mary Norell	Vice Chairman, EEZ Administrator	Stockton Area Chamber of Commerce
Gary Schwartz	Secretary	Stockton Lake Association
Shannon Snow	School Appointed	Stockton School District
Dixie Flynn	Taxing Entity Appointed	Cedar County Memorial Hospital
Amy Hedrick	Board Member	Mid-Missouri Bank, Stockton
Don Hertzberg	Board Member	Retired, MoDOT

Why Cedar County/Stockton?

With its hills and prairies, creeks and rivers, 26,000-acre Stockton Lake and so much more, Cedar County is a unique place to live and work. The county was founded in 1845 and was named after Cedar Creek, a tributary of the Sac River.

The population of Cedar County is about 13,982 residents in 6,044 households. Stockton, the county seat, has a current population of 1,819. Other cities and towns in the county include the villages of UMBER VIEW HEIGHTS and Jerico Springs, and the community of Caplinger Mills. Bordering counties are Dade, Polk, Barton and Vernon. It is about an hour northwest of the city of Springfield, about an hour east of the city of Nevada and about 30 minutes west of Bolivar. Major highways include U.S. 54, and state routes 32, 39, 97 and 215. Cedar County is a class 3 Missouri county. The county is served by city and rural fire departments and one fire protection district. Cedar County Ambulance District is comprised of a six-member board overseeing the business affairs of the district, and is supported by a one-half cent sales tax. Two hospitals serve the county's needs: Cedar County Memorial Hospital in El Dorado Springs, and Citizen's Memorial Hospital in Bolivar. Both Stockton (accredited with distinction) and El Dorado Springs (accredited) have top rated schools, and both cities offer health departments. The county also offers a Christian school and a boy's and girl's Christian boarding school. The county has two senior centers in the cities of Stockton and El Dorado Springs, and provides transportation through the OATS system. Each city has its own library, food pantry, city park, golf course, summer youth programs and airports.

Stockton Lake offers year-round recreational facilities with its many marinas, swim beaches, fishing, hunting, diving, eagle watching and more than 10 different trails, including a water trail. The Stockton Community Foundation does an annual run across Stockton dam in May, and a Stockton Lake Wild-Life Challenge Triathlon in August. With so much to offer, you couldn't ask for a better place to locate your business.

For more information or questions, call Marilyn Ellis, Chairman, at 276-4211 or 276-7826; or Mary Norell, Vice Chairman/EEZ Administrator, at 276-5213 or 955-3142.